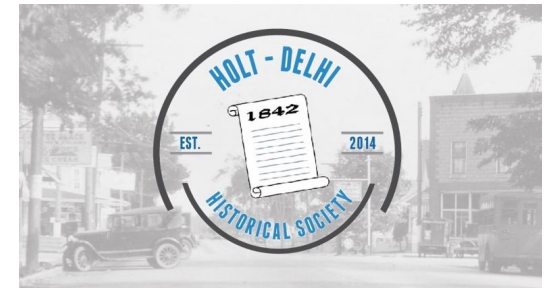


## Holt-Delhi Historical Society

Holt-Delhi Historical Society  
c/o Holt Community Connect  
2045 North Cedar Street  
Holt MI 48842

Email: [holtdelhihistory@gmail.com](mailto:holtdelhihistory@gmail.com)  
[holtdelhihistoricalsociety.webs.com](http://holtdelhihistoricalsociety.webs.com)

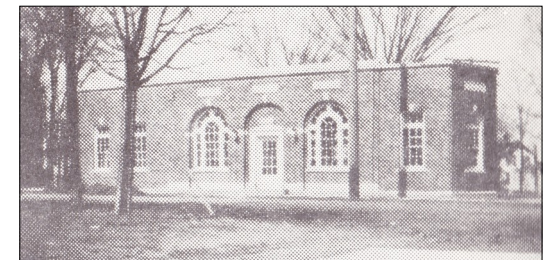
Check us out on Facebook!  
Holt, Michigan: A Slice of History



## HOLT-DELHI HISTORICAL SOCIETY



### Membership & Donation Form



### HOLT-DELHI HISTORICAL SOCIETY | MEMBERSHIP FORM

NAME: \_\_\_\_\_

ADDRESS: \_\_\_\_\_

EMAIL: \_\_\_\_\_ PHONE: \_\_\_\_\_





## About HDHS

The Holt-Delhi Historical Society, an organization founded in 2014, is dedicated to the preservation of history in the Holt-Delhi community while looking toward the future.

We would be thrilled to have you join us in our journey of historical discovery, as we uncover and document the stories of the people and events that molded the community that we live, work, and play.

When was Delhi Township established? Who were the Norths? Do you remember Hitchens Drug Store?

How do you fit into the history of the Holt-Delhi community? You have your own "Slice of History" in Holt and we would love to have you join us in our historical ventures in our beloved community!



### MEMBERSHIP

- \$20.....Individual
- \$30.....Family
- \$50.....Business

### Benefits of Membership

Members receive the bi-monthly HDHS newsletter, "A Slice of History" featuring a local history article and updates on HDHS events!

Dues are payable annually based on the date you first sent your check. You will be sent a reminder notice annually via email.

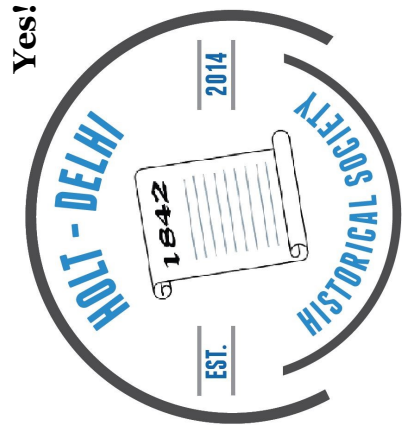
We're a small community-based organization, therefore we are unable to accept credit cards as a method of payment.

Please make your check payable to "Holt Community Connect," please specify "HDHS Membership" in the memo line.

**Yes! I would like to be part of the Holt-Delhi Historical Society!**

- \$20 Individual Membership
- \$30 Family Membership
- \$50 Business Membership
- Additional Donation, \$ \_\_\_\_\_

Total Enclosed: \$ \_\_\_\_\_



Thank you for joining the Holt-Delhi Historical Society!